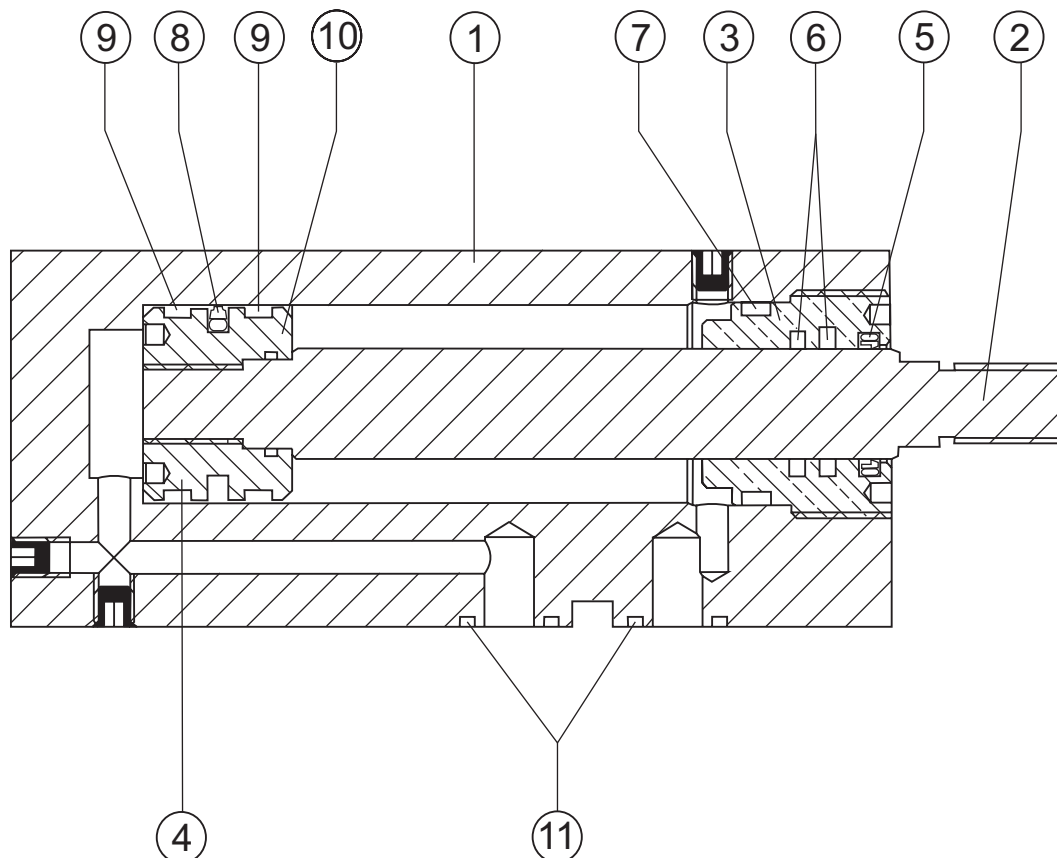




CARACTERÍSTICAS GENERALES SPECIFICATIONS

Presión máxima <i>Maximum pressure</i>	250 bar.
Velocidad máxima de funcionamiento <i>Maximum speed functioning</i>	15m/min
Fluido <i>Fluid</i>	Aceite mineral 2,5° a 6° Engler a 50°C <i>Mineral oil 2,5° to 6° Engler to 50°C</i>
Temperatura <i>Temperature</i>	20 a +80°C. Hasta 170°C - Vitón <i>20 a +80°C. To 170°C - Vitón</i>
Filtración <i>Filtration</i>	ISO 17/14



1 Cuerpo <i>Body</i>	3 Guía Vástago <i>Rod Guide</i>	5 Rascador <i>Wiper</i>	7 Junta Tórica Guía <i>Guide Dring Seal</i>	9 Guía Pistón <i>Piston Guide</i>
2 Vástago* <i>Rod</i>	4 Pistón <i>Piston</i>	6 Junta vástago <i>Rod seal</i>	8 Junta pistón <i>Piston seal</i>	10 Junta tórica <i>Dring Seal</i>
		11 Junta Tórica Fijación <i>Attachment Dring Seal</i>		

*Vástago F-125. Acero cromado



FUERZAS TEÓRICAS DE CILINDROS Presión-bar
THEORETICAL FORCES OF CYLINDERS Pressure-bar

Ø	Sección cm ² Section cm ²	90 bar	120 bar	140 bar	160 bar	180 bar	200 bar
32	8,04	723	965	1126	1286	1447	1608
40	12,56	1130	1500	1760	2009	2260	2512
50	19,63	1766	2350	2740	3140	3530	3925
63	31,17	2805	3740	4363	4987	5610	6230
80	50,26	4523	6031	7039	8040	9045	10052
100	78,54	7065	9420	10995	12565	14135	15705
125	122,72	11045	14725	17180	19635	22090	24540

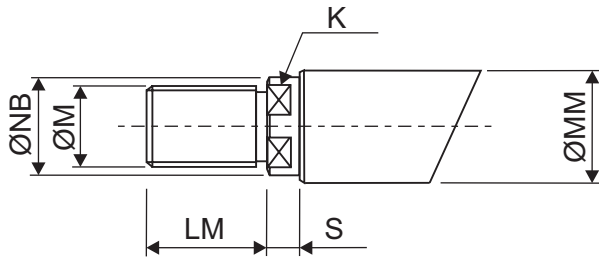
FUERZA A LA TRACCIÓN Presión-bar
FORCE TO TRACTION Pressure-bar

Ø	Vástago Rod	Sección diferencial Differential Section cm ²	90 bar	120 bar	140 bar	160 bar	180 bar	200 bar
32	18	5,50	495	660	770	880	990	1100
40	22	8,76	789	1052	1227	1402	1578	1753
50	28	13,48	1213	1617	1888	2155	2425	2695
63	36	21,00	1885	2515	2935	3355	3775	4195
80	45	34,36	3090	4120	4810	5495	6185	6870
100	56	53,91	4850	6465	7545	8625	9700	10780
125	70	84,24	7580	10105	11790	13475	15160	16845

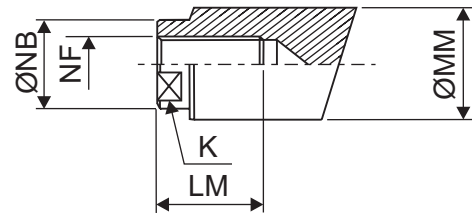


EXTREMO VÁSTAGO / ROD END

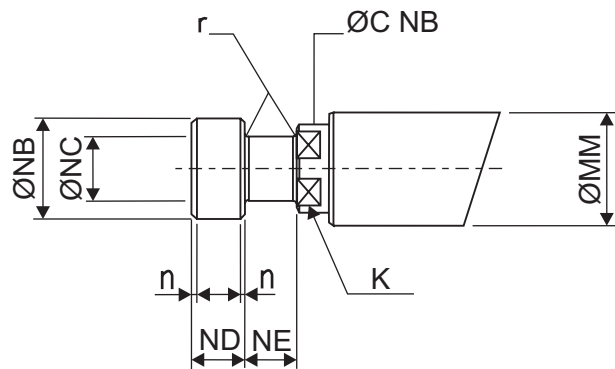
TERMINAL MACHO TIPO 1
MALE END TYPE 1



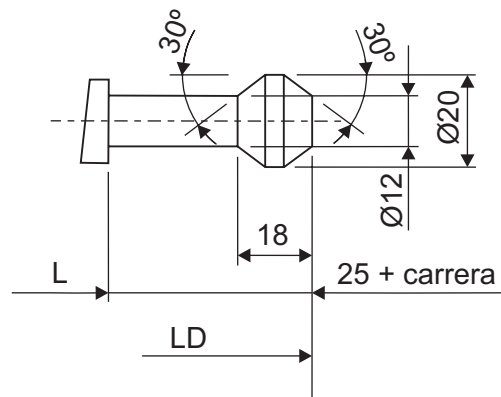
ROSCA INTERIOR TIPO 2
INTERIOR THREAD TYPE 2



CABEZA MARTILLO TIPO 3
HAMMER HEAD TYPE 3



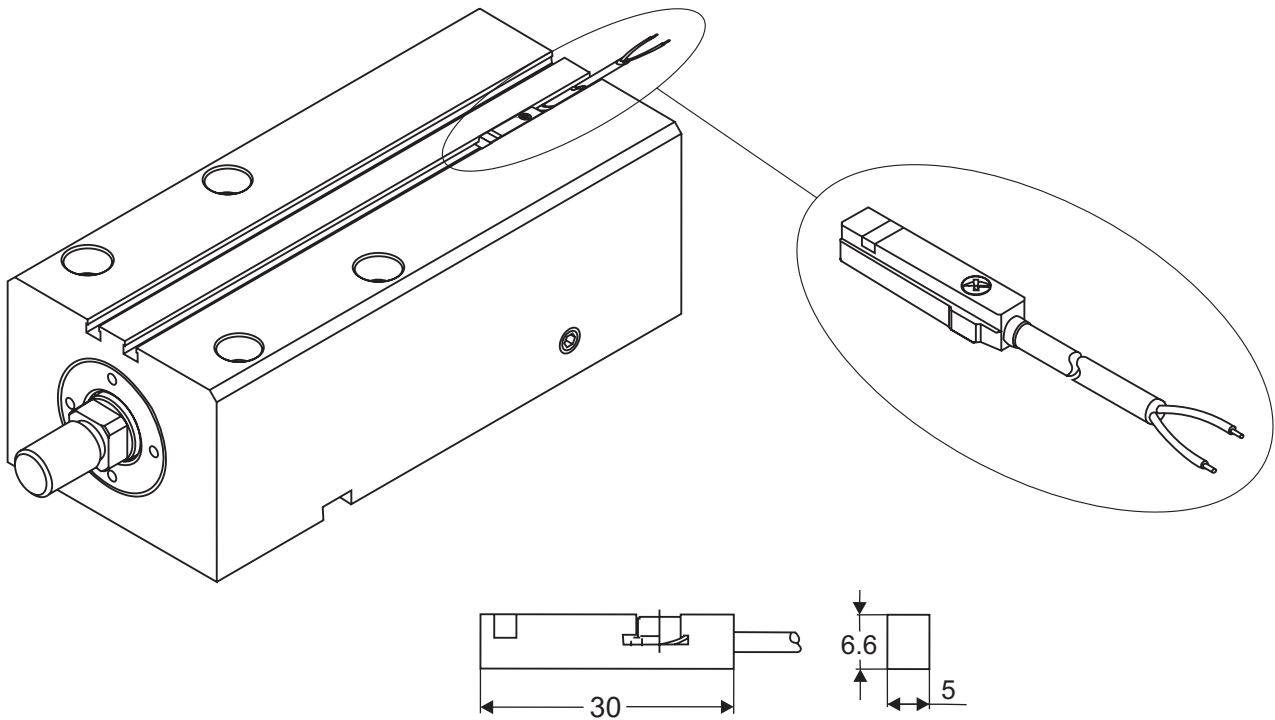
VÁSTAGO INFORMACIÓN TIPO D
INFORMATION ROD TYPE D



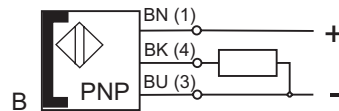
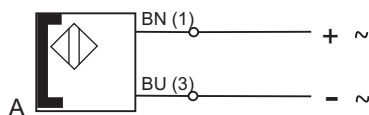
Diámetro Diameter Dimensiones Dimensiones	25	32	40	50	63	80	100	125
	MM Vástago/Rod	16	18	22	28	36	45	56
K	12	14	17	22	30	36	46	60
LM	20	20	25	30	40	50	60	70
M	M12x125	M12x125	M16x150	M20x150	M27x200	M33x200	M42x200	M52x200
NB	14	16	20	25	33	42	53	67
NC	8	10	13	16	22	30	36	46
ND	6	8	10	13	16	20	30	30
NE	6	8	10	13	16	20	30	30
n	0,5	1	1	1	2	2	2	2
r	1	1	1	1	2	2	2	2
NF	M8x125	M8x125	M10x150	M16x150	M20x150	M27x200	M33x200	M42x200
S	5	6	8	8	10	12	12	13



SENSORES MAGNÉTICOS / PROXIMITY SWITCHES



CARACTERÍSTICAS TÉCNICAS / SPECIFICATIONS		DMU2	DMU3
Circuito eléctrico / <i>Electric circuit</i>		REED	REED
Conexión / <i>Connection</i>		-	PNP
Indicación / <i>Indicating</i>		LED	LED
Tensión / <i>Voltage</i>	V dc	3,,130	5,,30
Tensión / <i>Voltage</i>	V ac	3,,130	5,,30
Máxima corriente / <i>Max current</i>	A	0,050	0,050
Tamaño cable / <i>Cable size</i>	mm ²	2x0,14	3x0,14
Longitud / <i>Length</i>		3m	3m
Tipo circuito / <i>Circuit style</i>		A	B





DESIGNACIÓN CILINDROS CBD

MODEL CODE FOR CBD CYLINDERS

Serie Series	Pistón Piston		Extremo Vástago Rod End		Carrera Stroke		Tipo de vástago Rod Type		Tipo juntas Seal type		Cota X X Dimension	
T	02	025	A	Rosca Exterior Exterior Coil	000	Carrera Stroke	S	Simple Vástago Simple Rod	N	J. Standard Standard S.	000	Cota X Dimension X
	03	032	B	Rosca Interior Interior Coil			D*	Doble Vástago Double Rod	T	J. Vitón Viton S.		
	04	040	C	Rosca C. Martillo Head Hammer Coil			M	Magnético Magnetic				
	05	050										
	06	063										
	08	080										
	10	100										
	12	125										

* Vástago de información

MAGNÉTICO / MAGNETIC

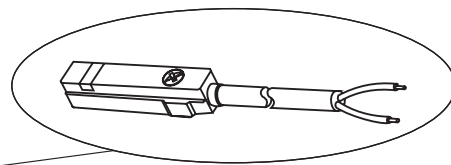
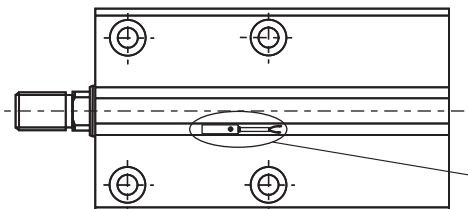
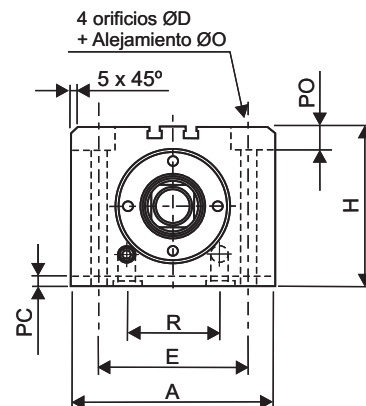
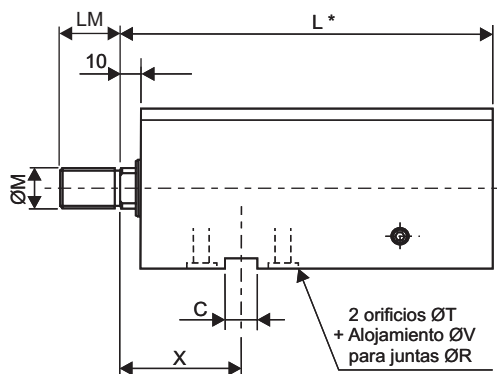
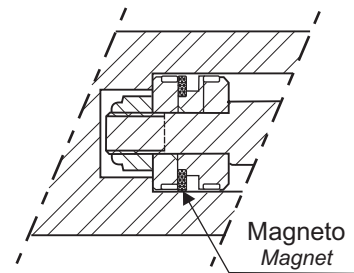
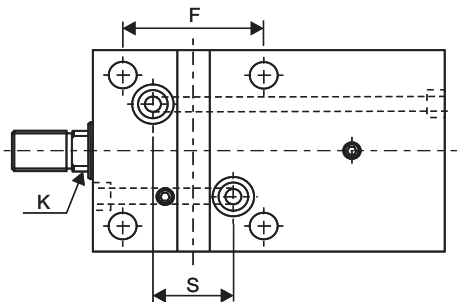
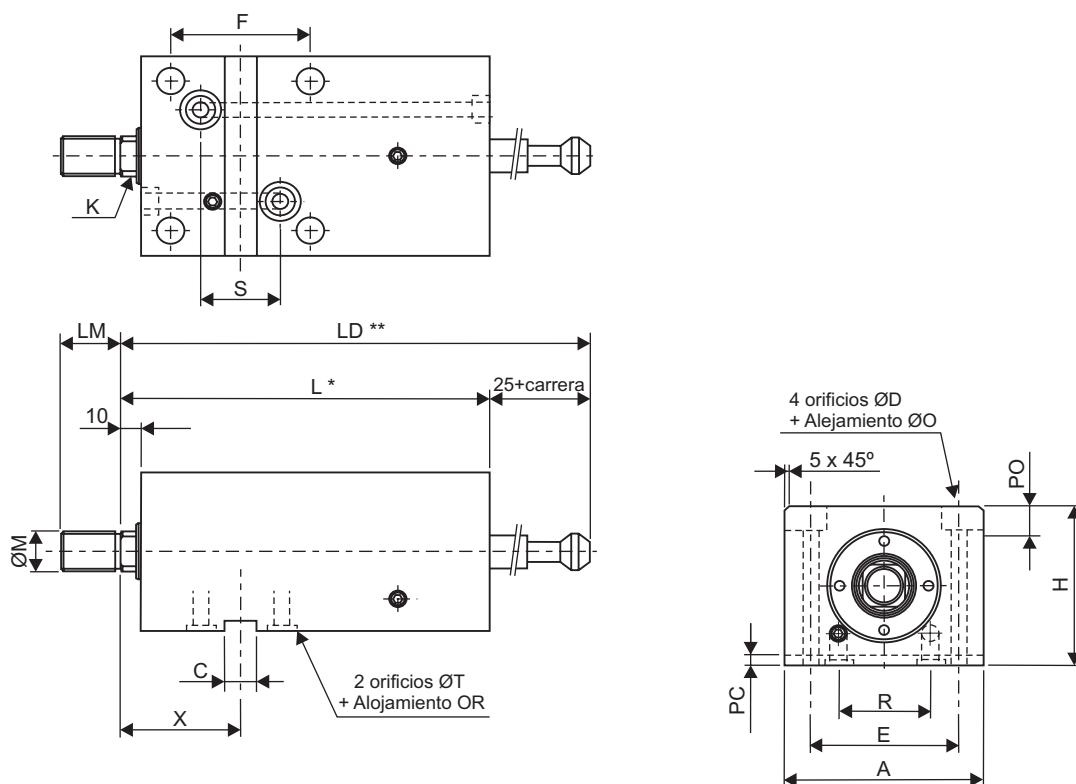




TABLA DE DIMENSIONES / DIMENSIONS TABLE



Diámetro Diameter	32	40	50	63	80	100	125	
Ø Vástago / Rod	18	22	28	36	45	56	70	
A	80	90	100	120	140	160	190	
C H8	10	12	16	16	20	20	20	
ØD	9	9	13	13	13	15	17	
E	58	65	75	90	110	130	160	
F	50	60	70	70	80	80	90	
H	60	70	80	100	110	130	160	
K	14	17	20	28	36	50	60	
L*	115	130	130	170	170	170	195	
LD**	140	155	155	195	195	195	220	
LM	20	25	30	40	50	60	70	
ØM	M12x125	M16x150	M20x150	M27x200	M33x200	M42x200	M52x200	
ØO	15	15	20	20	20	23	26	
PC	5	5	5	5	5	5	5	
PO	10	10	15	15	15	18	20	
R	36	40	46	50	70	80	100	
S	30	35	40	40	45	45	50	
T	8	10	10	12	14	14	14	
V	16	20	20	22	24	24	24	
X	mínimo	52	62	69	70	75	81	90
	Máximo	73+*	78+*	71+*	85+*	105+*	99+*	110+*
Ref. Junta Tórica	Or 10x2,5	Or 15x2,5	Or 15x2,5	Or 15x3	Or 18x3	Or 18x3	Or 20x3	

* : 1 carrera

** : 2 carreras (doble vástago)



DESIGNACIÓN CILINDROS CBI

MODEL CODE FOR CBI CYLINDERS

Serie Series	Pistón Piston	Extremo Vástago Rod End	Carrera Stroke	Tipo de vástago Rod Type	Tipo juntas Seal type	Cota X X Dimension
I	02 025	A Rosca Exterior Exterior Coil	000 Carrera Stroke	S Simple Vástago Simple Rod	N J. Standard Standard S.	000 Cota X Dimension X
	03 032	B Rosca Interior Interior Coil		D* Doble Vástago Double Rod	T J. Vitón Viton S.	
	04 040	C Rosca C. Martillo Head Hammer Coil		M Magnético Magnetic		
	05 050					
	06 063					
	08 080					
	10 100					
	12 125					

* Vástago de información

MAGNÉTICO / MAGNETIC

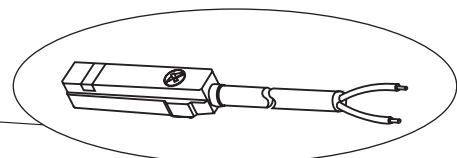
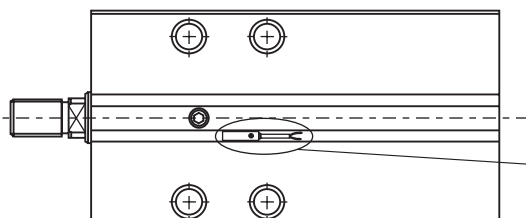
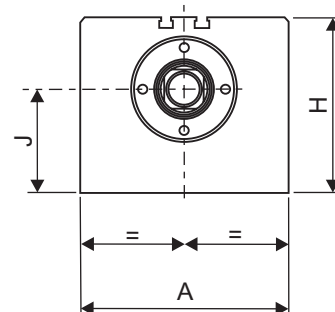
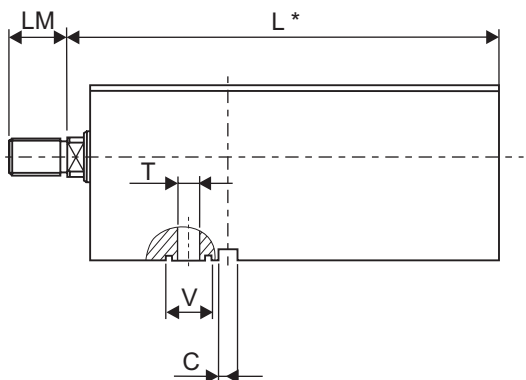
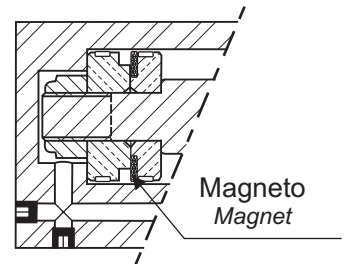
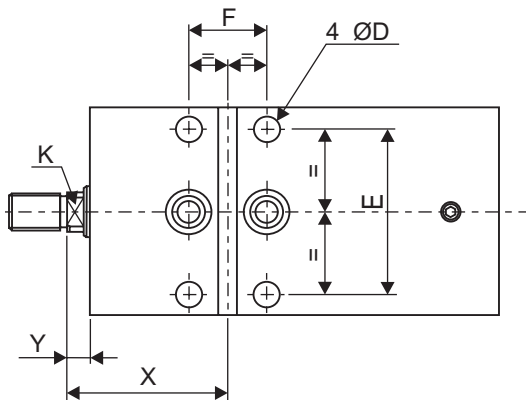
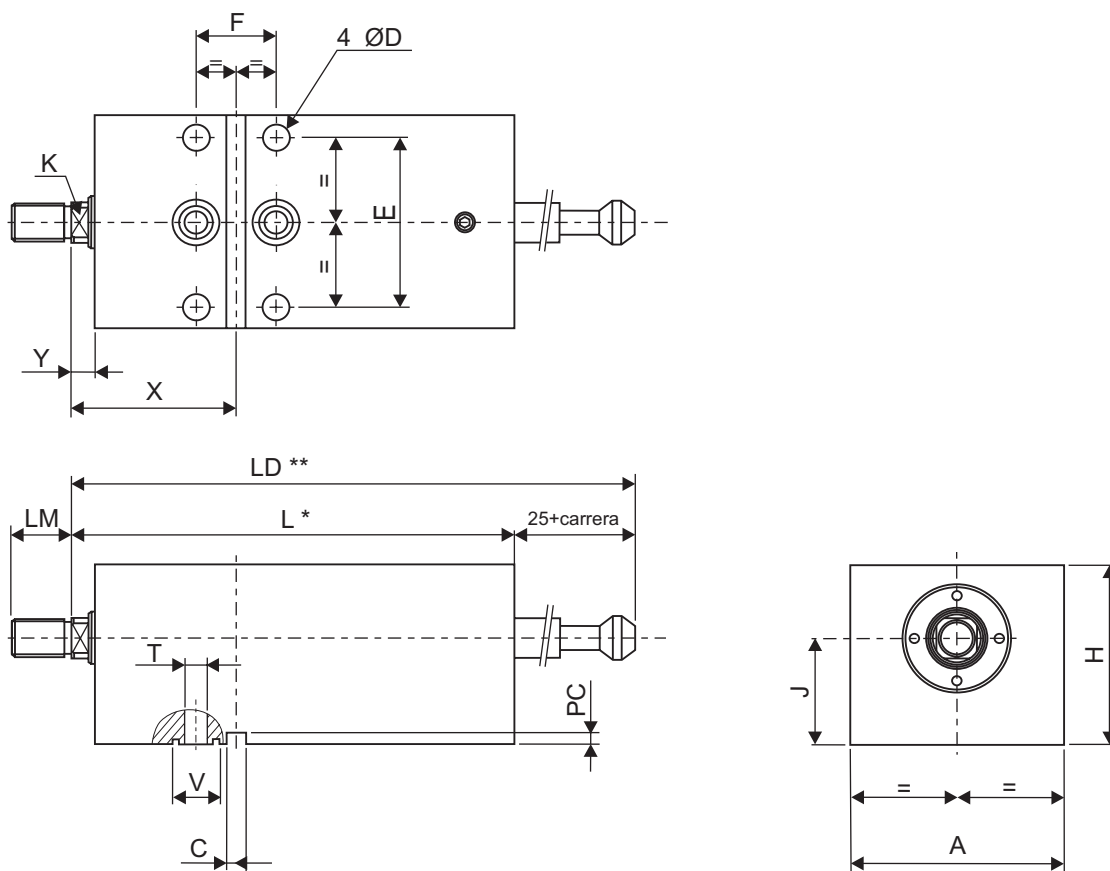




TABLA DE DIMENSIONES / DIMENSIONS TABLE



Diámetro Diameter	25	32	40	50	63	80	100	125	
Ø Vástago / Rod	16	18	22	28	36	45	56	70	
A	60	75	90	100	120	150	170	200	
C H ₈	6	8	8	10	12	16	16	20	
Ø D	6,6	9	11	11	13	13	15	17	
E	46	62	72	82	98	126	146	170	
F	23	29	34	35	42	44	48	56	
H	50	66	76	86	106	130	155	182	
J	26	38	45	50	60	70	85	100	
K	12	14	17	22	30	36	46	60	
L*	73	90	105	105	130	139	154	180	
LD**	98	115	130	130	155	164	179	205	
PC	4	5	5	5	5	5	5	5	
Ø T	5	8	10	10	12	14	14	14	
Ø V _{+0,2}	13	16	20	20	22	24	24	24	
X	mínima	43	53	60	60	72	76	87	97
	Máxima	X mínimo + Carrera							
Y	7	8	10	10	12	14	14	15	
Ref. Junta Tórica	Or 9x2	Or 10x2,5	Or 15x2,5	Or 15x2,5	Or 15x3	Or 18x3	Or 18x3	Or 20x3	

* : 1 carrera

** : 2 carreras (doble vástago)

CILCOIL,S.A.- Se reserva el derecho de modificar: Técnica, material, cotas y formas sin previo aviso.

CILCOIL,S.A.- Reserves the rights to modify: Techniques, materials,dimensions and shapes without prior notice.



DESIGNACIÓN CILINDROS CBP

MODEL CODE FOR CBP CYLINDERS

Serie Series	Pistón Piston	Extremo Vástago Rod End	Carrera Stroke	Tipo de vástago Rod Type	Tipo juntas Seal type	Alimentación Oil Feeder	Fijación Attachments
P	02 025	A Rosca Exterior Exterior Coil	000 Carrera Stroke	S Simple Vástago Simple Rod	N J. Standard Standard S.	4 Lado Vástago Side Rod	P Agujeros Pasados Past Holes
	03 032	B Rosca Interior Interior Coil		D* Doble Vástago Double Rod	T J. Vitón Vitón S.	5 Lado Contrario Opposite Side R.	R Agujeros roscados Threaded Holes
	04 040	C Rosca C. Martillo Head Hammer C.		M Magnético Magnetic			
	05 050						
	06 063						
	08 080						
	10 100						
	12 125						

* Vástago de información

MAGNÉTICO / MAGNETIC

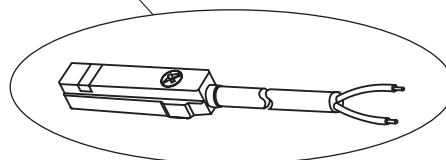
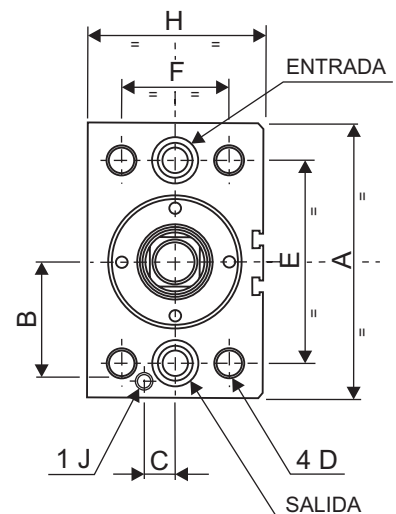
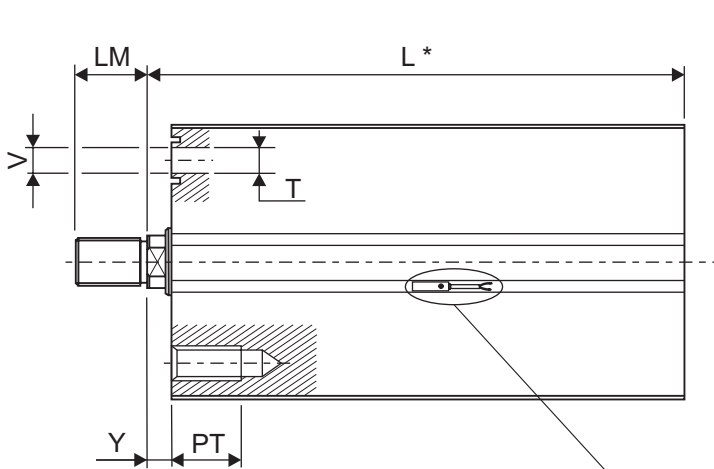
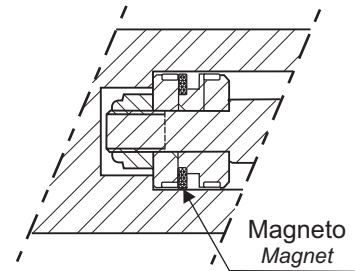
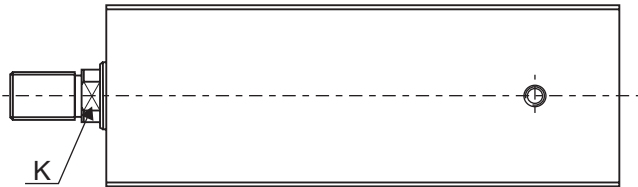
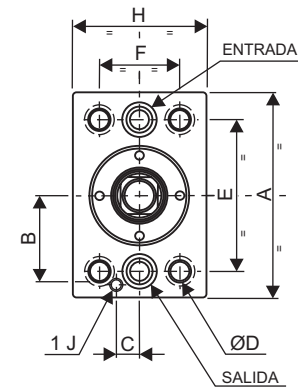
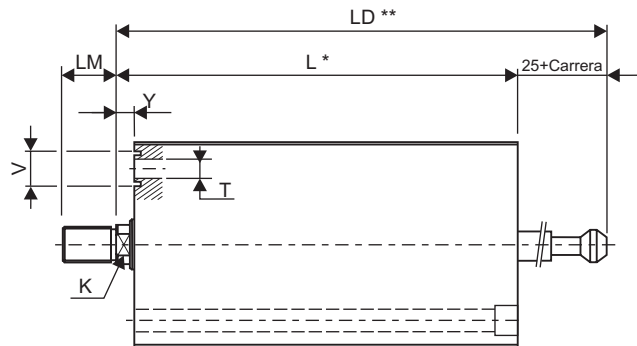


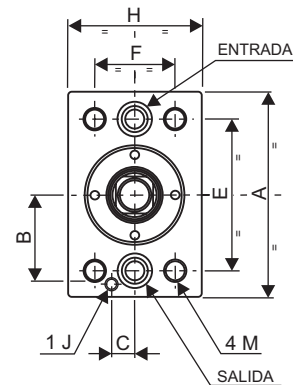
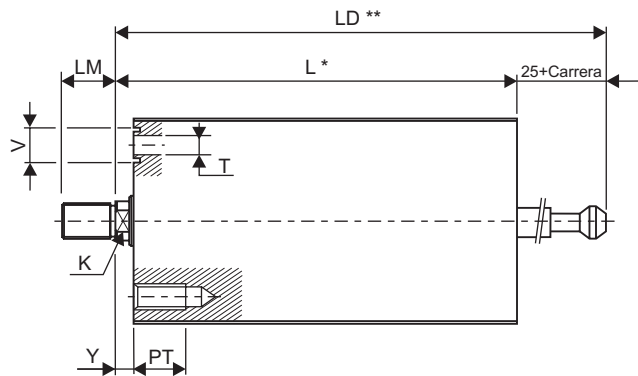


TABLA DE DIMENSIONES / DIMENSIONS TABLE

CBP
TIPO
4L



CBP
TIPO
4T



Diámetro Diameter	25	32	40	50	63	80	100	125
Ø Vástago / Rod	16	18	22	28	36	45	56	70
A	68	82	105	115	130	155	190	225
B	30	37	46	50	55	67	85	90
C	9	11	13	13	17	20	25	32
Ø D	M8x125	M8x125	M10x150	M12x175	M16x200	M20x250	M24x300	M24x300
E	50	60	75	85	100	120	150	180
F	30	35	42	45	65	80	100	130
H	45	55	65	75	95	120	150	180
Ø J	3	3	5	6	8	10	10	12
K	12	14	17	22	30	36	46	60
L*	77	98	115	125	143	159	170	195
LD**	102	123	140	150	168	184	195	220
M	M8	M8	M10	M12	M16	M 20	M24	M24
PT	15	15	20	30	35	40	50	50
Ø T	6	8	10	10	12	14	14	14
V +0,2	13	16	20	20	22	24	24	24
Y	7	8	10	10	12	14	14	15
Ref. Junta Tórica	Or 9x2	Or 10x2,5	Or 15x2,5	Or 15x2,5	Or 15x3	Or 18x3	Or 18x3	Or 20x3

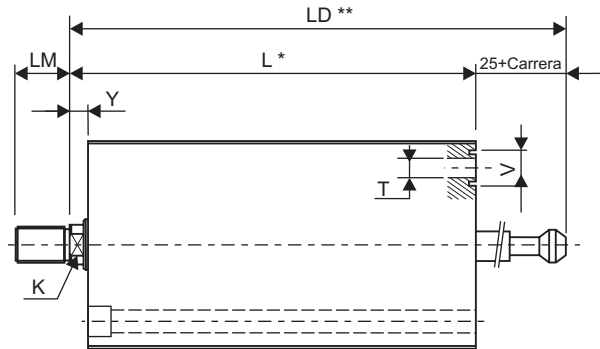
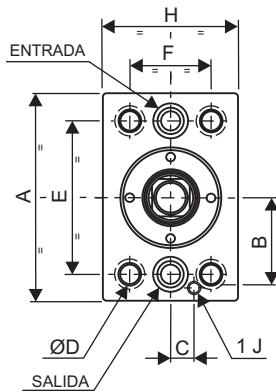
* : 1 carrera

** : 2 carreras (doble vástago)

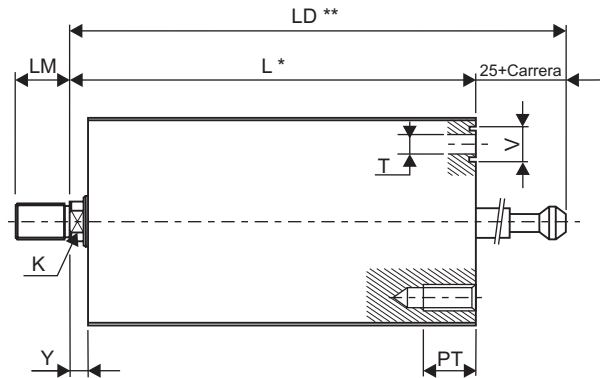
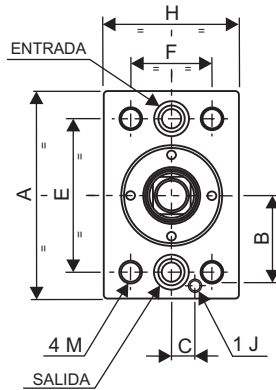


TABLA DE DIMENSIONES / DIMENSIONS TABLE

CBP
TIPO
5L



CBP
TIPO
5T



Diámetro Diameter	25	32	40	50	63	80	100	125
Ø Vástago / Rod	16	18	22	28	36	45	56	70
A	68	82	105	115	130	155	190	225
B	30	37	46	50	55	67	85	90
C	9	11	13	13	17	20	25	32
Ø D	M8x125	M8x125	M10x150	M12x175	M16x200	M20x250	M24x300	M24x300
E	50	60	75	85	100	120	150	180
F	30	35	42	45	65	80	100	130
H	45	55	65	75	95	120	150	180
Ø J	3	3	5	6	8	10	10	12
K	12	14	17	22	30	36	46	60
L*	77	98	115	125	143	159	170	195
LD**	102	123	140	150	168	184	195	220
M	M8	M8	M10	M12	M16	M 20	M24	M24
PT	15	15	20	30	35	40	50	50
Ø T	6	8	10	10	12	14	14	14
V +0,2	13	16	20	20	22	24	24	24
Y	7	8	10	10	12	14	14	15
Ref. Junta Tórica	Or 9x2	Or 10x2,5	Or 15x2,5	Or 15x2,5	Or 15x3	Or 18x3	Or 18x3	Or 20x3

* : 1 carrera

** : 2 carreras (doble vástago)