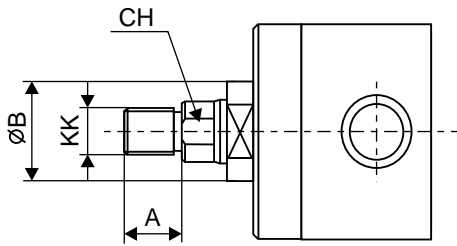


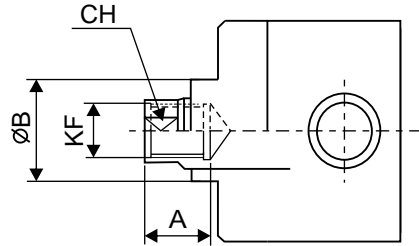


EXTREMO VÁSTAGO / ROD END

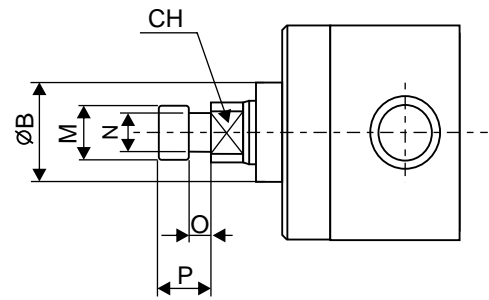
STANDARD



SF

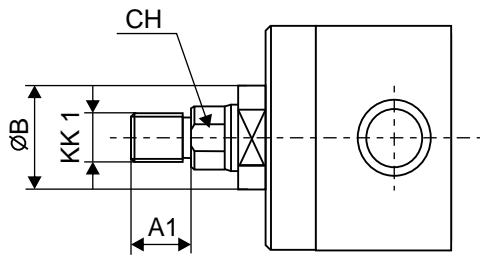


ST

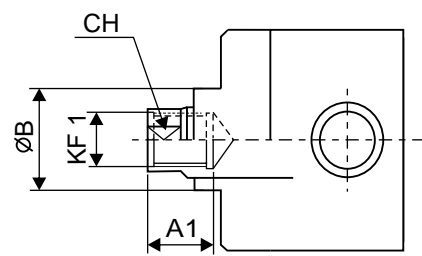


Vástago Rod	12	14	18	22	28	36	45	56	70	90	110	140
A	14	16	18	22	28	36	45	56	63	85	95	112
B f9	24	26	30	34	42	50	60	72	88	108	133	163
CH	10	12	15	19	22	30	36	46	60	75	95	120
KK	M10x1,25	M12x1,25	M14x1,5	M16x1,5	M20x1,5	M27x2	M33x2	M42x2	M48x2	M64x3	M80x3	M100x3
KF	M8x1	M10x1,25	M12x1,25	M16x1,5	M20x1,5	M27x2	M33x2	M42x2	M48x2	M64x3	M80x3	M100x3
M	11	13	16	18	22	28	35	45	56	70		
N	6,5	8	10	11	14	18	22	28	35	45		
O	5	6	7	8	10	13	16	20	25	35		
P	10	12	14	16	20	25	32	40	50	70		

SL DIN 24554



FL DIN 24554



Vástago Rod	25		32			40			50			63			80			100			125			160			200		
Pistón Bore	12	18	14	18	22	18	22	28	22	28	36	28	36	45	36	45	56	45	56	70	56	70	90	70	90	110	90	110	140
A1	14		16			18			22			28			36			45			56			63			85		
B f9	24	30	26	30	34	30	34	42	34	42	50	42	50	60	50	60	72	60	72	88	72	88	108	88	108	133	108	133	163
CH	10	15	12	15	19	15	19	22	19	22	30	22	30	36	30	36	46	36	46	60	46	60	75	60	75	95	75	95	120
KK1	M10x1,25		M12x1,25			M14x1,5			M16x1,5			M20x1,5			M27x2			M33x2			M42x2			M48x2			M64x3		
KF1	M8x1		M10x1,25			M12x1,25			M16x1,5			M20x1,5			M27x2			M33x2			M42x2			M48x2			M64x3		

CILCOIL, S.A. - Se reserva el derecho de modificar: Técnica, material, cotas y formas sin previo aviso.
CILCOIL, S.A. - Reserves the rights to modify: Techniques, materials, dimensions and shapes without prior notice.