

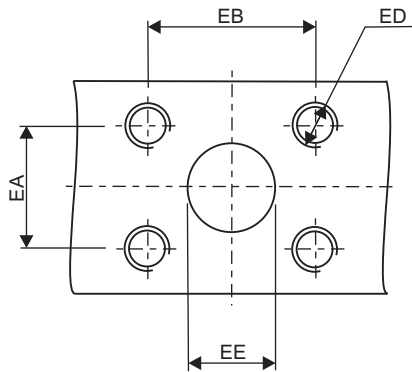


ISO 6022

CONEXIONES
PORT TYPE

	STANDARD	SOBRE DEMANDA (SUPLEMENTO DE PRECIO)					ON REQUEST (ADDITIONAL PRICE)				
	G	M	S	N	U	V	W	X	Y	Z	
PistonØ BoreØ	BSP GAS ISO 228/1	METRICA METRIC	ISO/DIS 6162,2 (2,5-31,5 MP A)	NPT	UNF-2B	BSP GAS ISO 228/1	METRICA METRIC	ISO/DIS 6162,2 (2,5-31,5 MP A)	NPT	UNF-2B	
50	1/2"	22x1,5	-	1/2"	3/4-16	3/4"	27x2	-	3/4"	1 1/16-12	
63	3/4"	27x2	13	3/4"	1 1/16-12	1"	33x2	-	1"	1 5/16-12	
80	3/4"	27x2	13	3/4"	1 1/16-12	1"	33x2	19	1"	1 5/16-12	
100	1"	33x2	19	1"	1 5/16-12	1 1/4"	42x2	25	1 1/4"	1 5/8-12	
125	1"	33x2	19	1"	1 5/16-12	1 1/4"	42x2	25	1 1/4"	1 5/8-12	
140	1 1/4"	42x2	25	1 1/4"	1 5/8-12	1 1/2"	48x2	32	1 1/2"	1 7/8-12	
160	1 1/4"	42x2	25	1 1/4"	1 5/8-12	1 1/2"	48x2	32	1 1/2"	1 7/8-12	
180	1 1/4"	42x2	25	1 1/4"	1 5/8-12	1 1/2"	48x2	32	1 1/2"	1 7/8-12	
200	1 1/4"	42x2	25	1 1/4"	1 5/8-12	1 1/2"	48x2	32	1 1/2"	1 7/8-12	
250	1 1/2"	48x2	32	1 1/2"	1 7/8-12	2"	60x2	38	2"	2 1/2-12	
320	2"	60x2	32	2"	2 1/2-12	-	-	38	-	-	

ISO/DIS 6162.2 (2,5-31,5 Mpa) - SAE 3000



(*ISO/DIS 6162.2 (40MPa) - SAE 6000)

DN	EE 0 -1,5	EA ±0,25	EB ±0,25	ED
13	13	17,5	38,1	M 8x1,25
19	19	22,3	47,6	M 10x1,5
25	25	26,2	52,4	M 10x1,5
32	32	30,2	58,7	M 12x1,75
*38	38	36,5	79,3	M 16x2

	Tolerancias según ISO 8135				Tolerances to ISO 8135		
Dimensiones Installation dimensions	WC	XC ₁₎	XO ₁₎	XS	XV	ZP ₁₎	Tolerancia de carrera
Tipo de fijación Mounting type	MF3	MP3	MP5	MS2	MT4	MF4	Stroke tolerance

Carrera / Stroke	Tolerancias / Tolerances						
0 - 499	±2	±1,5	±1,5	±2	±2	±1,5	0 +3
500 - 1249	±2,8	±2	±2	±2,8	±2,8	±2	0 +4
1250 - 3149	±4	±3	±3	±4	±4	±3	0 +6
3150 - 8000	±8	±5	±5	±8	±8	±5	0 +10

1) Carrera incluida / Stroke length included