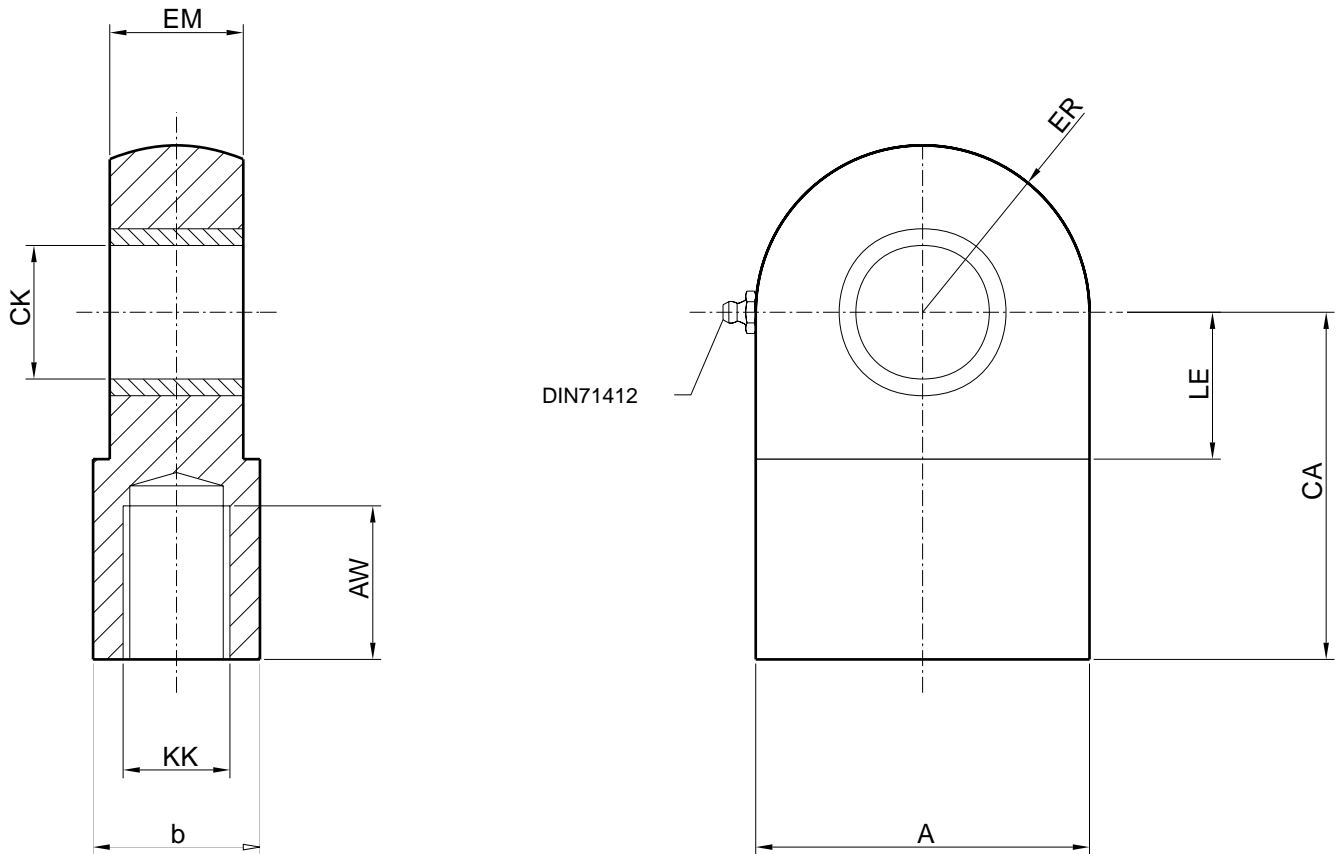




• **ARRASTRADOR MACHO (ISO 6981)** •

• ROD END PLAIN EYES (ISO 6981) •



| CODIGO | CK _{H9} | EM _{h12} | KK | AW | CA | LE | ER | b | A |
|--------|------------------|-------------------|----------|-----|-----|-----|-----|-----|-----|
| 52R025 | 12 | 12 | M12x1,25 | 17 | 38 | 14 | 16 | 16 | 32 |
| 52R032 | 16 | 16 | M14x1,5 | 19 | 44 | 18 | 20 | 20 | 40 |
| 52R040 | 20 | 20 | M16x1,5 | 23 | 52 | 22 | 25 | 25 | 50 |
| 52R050 | 25 | 25 | M20x1,5 | 29 | 65 | 27 | 32 | 32 | 64 |
| 52R063 | 32 | 32 | M27x2 | 37 | 80 | 32 | 40 | 40 | 80 |
| 52R080 | 40 | 40 | M33x2 | 46 | 97 | 41 | 50 | 50 | 100 |
| 52R100 | 50 | 50 | M42x2 | 57 | 120 | 50 | 63 | 63 | 126 |
| 52R125 | 63 | 63 | M48x2 | 64 | 140 | 62 | 71 | 71 | 142 |
| 52R160 | 80 | 80 | M64x3 | 86 | 180 | 78 | 90 | 90 | 180 |
| 52R200 | 100 | 100 | M80x3 | 96 | 210 | 98 | 112 | 112 | 224 |
| 52R250 | 125 | 125 | M100x3 | 113 | 260 | 120 | 160 | 160 | 320 |
| 52R320 | 160 | 160 | M125x4 | 126 | 310 | 150 | 200 | 200 | 400 |

CILCOIL, S.A. - se reserva el derecho de modificar: Técnica, material, cotas y formas sin previo aviso.

CILCOIL, S.A. - reserves the rights to modify: Techniques, materials, dimensions and shapes without prior notice.

